



ZEX LTD

Designing Spaces, Creating Legacies

Visionary Architectural Solutions for Residential and Commercial Projects. Where Innovation, Sustainability, and Collaboration meet to transform your architectural vision into reality.

Welcome & Introduction

At ZEX Company, we believe architecture is the art of possibility—where creativity meets functionality to shape the way we live, work, and interact. For over two decades, our team of dedicated architects and designers has been transforming spaces and creating environments that inspire, function beautifully, and stand the test of time.

Our journey began with a simple yet powerful vision: to create architectural solutions that go beyond buildings to become lasting legacies. Today, we're proud to have partnered with hundreds of clients across the residential and commercial spectrum, turning their dreams and requirements into physical realities that exceed expectations.

We approach each project as a unique opportunity to innovate, listening carefully to your needs and aspirations before crafting spaces that reflect your identity and enhance your experience. Whether you're envisioning a dream home, planning a commercial development, or reimagining an existing structure, we bring the perfect blend of creative thinking, technical expertise, and practical problem-solving to every challenge.



Our collaborative process puts you at the center, ensuring that your vision drives our design. We believe that the most successful projects emerge from true partnerships between client and architect, where open communication, mutual respect, and shared excitement fuel the creative process from concept to completion.

As you explore this brochure, you'll discover our approach, our services, and examples of our work that demonstrate our commitment to excellence. We invite you to imagine the possibilities of working together and look forward to the opportunity to help you create spaces that will become your legacy.

Our Vision & Mission

Shaping Tomorrow's Environment

At ZEX Company, our vision extends far beyond the structures we design. We envision a world where architecture serves as a positive force, creating environments that elevate human experience, promote community, and harmonize with the natural world. We see each project as an opportunity to shape how people live, work, and interact—not just today, but for generations to come.

This forward-thinking vision informs everything we do, from the smallest residential renovation to the largest commercial development. We strive to create spaces that are not only beautiful and functional but also meaningful—environments that tell stories, foster connections, and stand as lasting contributions to the built landscape.

Our Mission

To deliver innovative, sustainable, and thoughtfully designed architectural solutions that perfectly balance aesthetic vision with practical functionality, while exceeding our clients' expectations through collaborative partnership and exceptional service.

Client-Centered Approach

We place your needs, aspirations, and unique requirements at the heart of our design process. By truly understanding what matters to you, we create spaces that reflect your identity and enhance your experience.

Sustainable Innovation

We push the boundaries of conventional architecture to develop forward-thinking solutions that minimize environmental impact, maximize resource efficiency, and create healthy, resilient spaces that will stand the test of time.

With each project, we commit to translating this mission into reality—creating architecture that inspires, functions flawlessly, and leaves a positive legacy for future generations. Our dedication to excellence means that we never settle for the ordinary when extraordinary is possible.

Why Choose ZEX Company?

When you select ZEX Company for your architectural needs, you're choosing a partner dedicated to transforming your vision into reality through an exceptional blend of creativity, technical expertise, and personalized service. Our distinctive approach sets us apart in an industry where the difference between good and extraordinary often lies in the details.

We've cultivated a reputation for delivering architectural solutions that seamlessly integrate stunning aesthetics with practical functionality. Each design emerges from deep consideration of how spaces will be experienced, ensuring that beauty never comes at the expense of usability. This balance has become our signature—creating buildings and interiors that are as delightful to use as they are to behold.

Our team brings diverse perspectives and specialized expertise to every project, allowing us to tackle complex challenges with innovative solutions. We stay at the forefront of architectural trends, technologies, and sustainable practices, yet we're never driven by fashion. Instead, we focus on creating timeless designs that will remain relevant and inspiring for decades to come.



Client-Centered Approach

We prioritize your needs and vision at every stage, ensuring the final result exceeds expectations.



Proven Expertise

With numerous awards and certifications, our professional excellence is recognized industry-wide.



Innovative Solutions

Our creative problem-solving transforms challenges into opportunities for remarkable design.



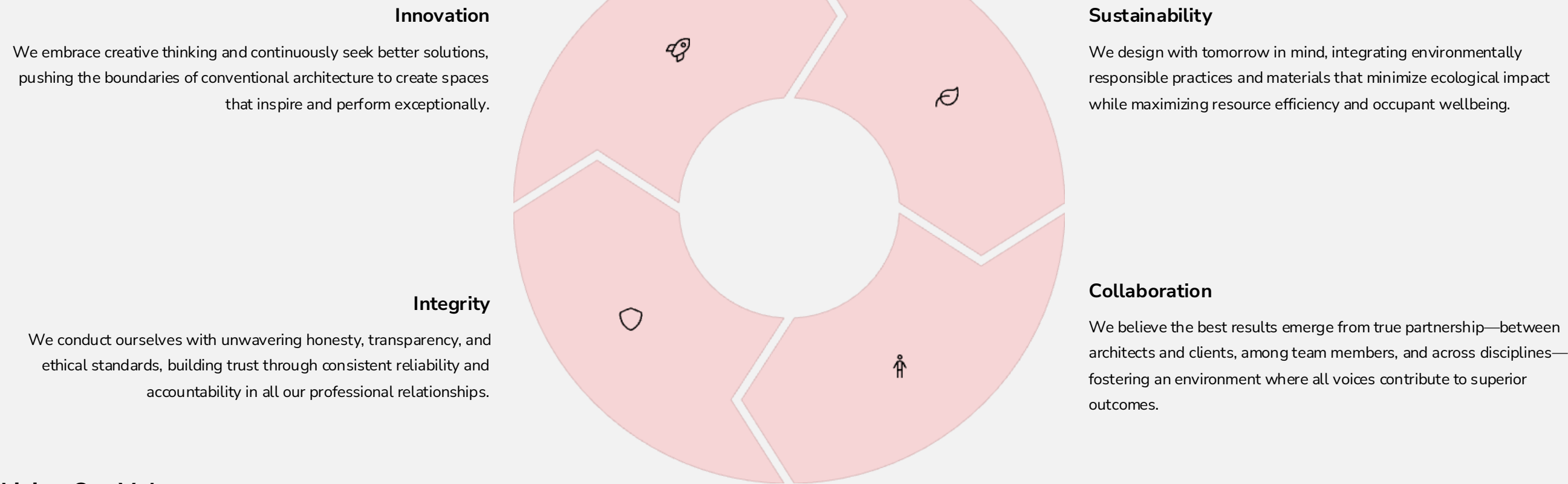
Timely Delivery

We respect your timeline and budget with meticulous project management practices.



Our Core Values

At ZEX Company, our core values aren't just words on a page—they're the principles that guide every decision we make and every interaction we have. They define who we are as a firm and what you can expect when working with us. These foundational beliefs permeate our culture and inform our approach to architecture, business relationships, and community engagement.



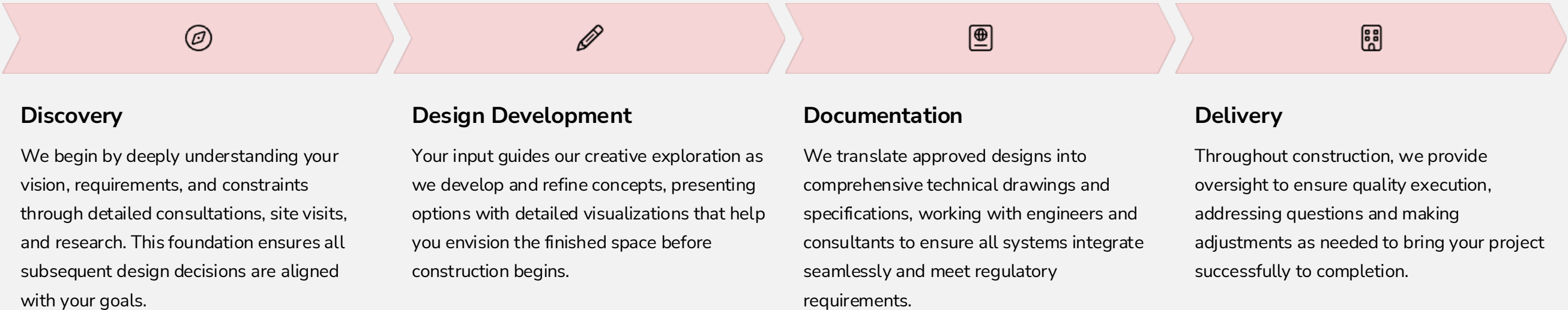
Living Our Values

These core values aren't abstract concepts—they're actively demonstrated in our daily operations and long-term strategies. From implementing rigorous sustainability standards that exceed code requirements to our transparent communication practices, we strive to embody these principles in every aspect of our work.

When you work with ZEX Company, you'll experience these values firsthand. Our innovative approach will help you discover possibilities you might not have imagined. Our commitment to sustainability will ensure your project is not only beautiful today but responsible for tomorrow. Our collaborative process will make you a true partner in the creative journey. And our integrity will give you confidence that decisions are always made with your best interests at heart.

The ZEX Design Process

At ZEX Company, we've refined our design process to ensure consistent excellence while maintaining the flexibility to address each project's unique requirements. Our methodical yet creative approach guides projects from initial concept to successful completion, providing clarity and confidence at every stage.



Transparent Project Management

Clear communication forms the backbone of our process. We believe you should never be left wondering about the status of your project or surprised by unexpected developments. Our project management approach includes:

- Regular progress updates and milestone reviews to keep you informed and involved
- Dedicated project managers who serve as your consistent point of contact
- Digital collaboration tools that provide real-time access to project documentation
- Proactive identification and resolution of potential challenges before they impact schedules or budgets
- Transparent budget tracking and cost control measures throughout the project lifecycle

This structured yet flexible process allows us to address the complexities of architectural projects while maintaining focus on your goals and priorities. By combining creative design thinking with rigorous management practices, we deliver exceptional results that bring your vision to life while respecting your time and resources.

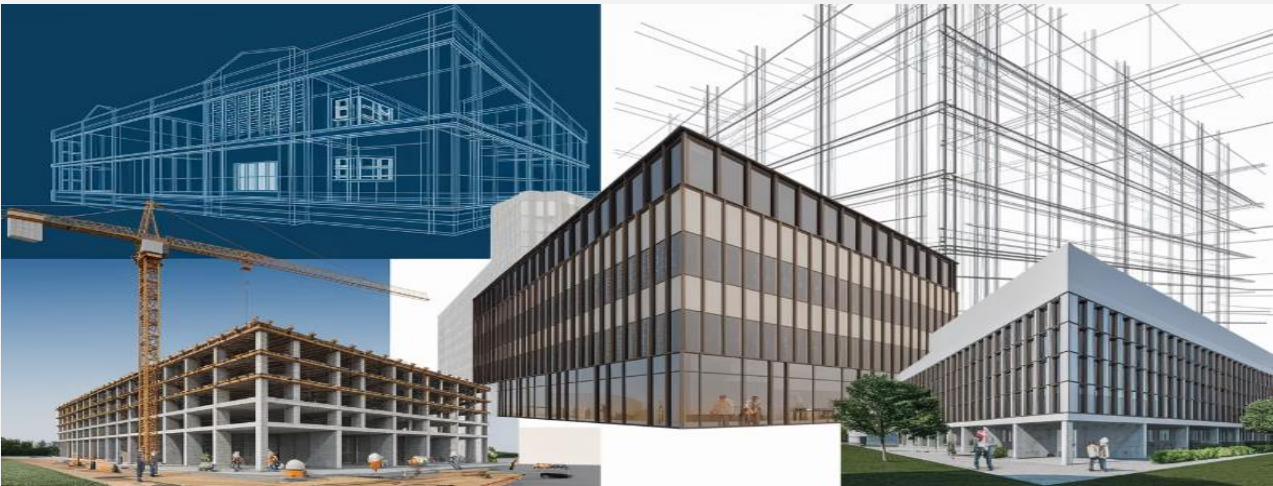
Comprehensive Architectural Services

ZEX Company offers a complete spectrum of architectural services to address diverse project needs across residential, commercial, mixed-use, and institutional sectors. Our integrated approach allows us to provide seamless support throughout the entire project lifecycle, from initial concept to final occupancy and beyond.

Full Spectrum Solutions

We've intentionally developed our capabilities to encompass every aspect of the architectural process, allowing us to deliver cohesive results whether you need targeted expertise for a specific phase or comprehensive support from concept to completion. Our services include:

- **Pre-Design Services:** Feasibility studies, programming, site analysis, and code research
- **Schematic Design:** Concept development, preliminary space planning, and initial visualizations
- **Design Development:** Refinement of designs, material selections, and system integration
- **Construction Documentation:** Detailed technical drawings and specifications
- **Bidding & Negotiation:** Contractor selection assistance and cost optimization
- **Construction Administration:** Site visits, quality control, and coordination with builders
- **Post-Occupancy:** Evaluation, adjustments, and long-term facility planning



Project Types

Residential

- Custom homes and renovations
- Multi-family developments
- Luxury residences
- Sustainable housing solutions

Commercial

- Office buildings and interiors
- Retail and restaurant spaces
- Hospitality venues
- Corporate campuses

Institutional

- Educational facilities
- Healthcare environments
- Cultural and community centers
- Government buildings

Residential Solutions

Your home is more than just a building—it's the backdrop for your life's most precious moments and a reflection of your unique identity. At ZEX Company, we specialize in creating residential spaces that perfectly balance your lifestyle needs with architectural excellence, resulting in homes that are both deeply personal and universally admired.

Creating Homes That Tell Your Story

Whether you're envisioning a sleek urban apartment, a spacious suburban family home, or a tranquil retreat in a natural setting, our residential architecture services are tailored to bring your specific vision to life. We understand that successful residential design must address both the practical requirements of daily living and the emotional aspects of creating a place that truly feels like home.

Our Residential Expertise

- **Custom Single-Family Homes:** Bespoke residences uniquely designed to reflect your lifestyle, preferences, and site conditions
- **Multi-Unit Housing:** Thoughtfully planned apartments, townhomes, and condominiums that maximize space and foster community
- **Renovations & Additions:** Strategic transformations that breathe new life into existing homes while honoring their original character
- **Luxury Residences:** Exceptional homes featuring premium materials, sophisticated systems, and exquisite detailing
- **Vacation & Second Homes:** Specialized retreats designed for relaxation, entertainment, and connection with natural surroundings

The ZEX Residential Difference

Our approach to residential architecture begins with listening. We take the time to understand not just your functional requirements, but also how you want your home to feel and the experiences you want it to facilitate. This deep understanding informs every decision, from the overall spatial organization to the smallest finishing details.

We believe successful homes should:

- Reflect your personal aesthetics while maintaining architectural integrity
- Function effortlessly for your daily activities and special occasions
- Connect thoughtfully with their surrounding environment
- Evolve gracefully as your needs change over time
- Balance timeless design principles with contemporary amenities

From initial concept through move-in day and beyond, we guide you through the entire process of creating or transforming your home. Our extensive experience with residential regulations, construction methods, and material applications ensures that your project progresses smoothly while achieving the highest standards of quality and craftsmanship.

Commercial Projects

In today's competitive business landscape, your physical environment plays a crucial role in your organization's success. At ZEX Company, we create commercial spaces that work as hard as you do—enhancing productivity, expressing your brand identity, and adapting to evolving business needs. Our commercial architecture solutions deliver measurable value through thoughtful design that supports your operational goals while making a powerful impression on clients, customers, and employees.

Strategic Spaces for Business Success

We understand that commercial projects require a unique balance of aesthetic appeal, functional efficiency, and return on investment. Our team brings specialized expertise in workplace strategy, retail psychology, hospitality experiences, and other commercial domains to create environments that provide tangible business benefits.

Through careful analysis of your operations, brand values, and growth projections, we develop architectural solutions that not only accommodate your current needs but also provide the flexibility to adapt as your business evolves. This forward-thinking approach ensures your investment continues to deliver value for years to come.

Commercial Project Types



Office Environments

From sleek corporate headquarters to flexible coworking spaces, we design workplaces that foster collaboration, enhance productivity, and express company culture while adapting to evolving work patterns.



Hospitality Destinations

Our designs for hotels, resorts, and entertainment venues blend memorable aesthetics with operational efficiency, creating environments that delight guests while supporting smooth service delivery.

Our commercial projects benefit from our thorough understanding of business operations, regulatory requirements, and construction economics. We work closely with developers, business owners, and facility managers to create solutions that align with your financial objectives while delivering exceptional environments that give your organization a competitive edge.

Every commercial project receives our signature attention to both the big picture strategic considerations and the crucial details that impact daily operations. The result is architecture that does more than house your business—it actively contributes to your success.



Retail & Restaurant Spaces

We create compelling customer experiences through spaces that showcase products effectively, optimize traffic flow, and translate brand identity into physical form for maximum impact.



Industrial & Mixed-Use

We develop integrated solutions for manufacturing, warehousing, and multi-purpose facilities that optimize workflows, incorporate sustainable practices, and create comfortable work environments.

Sustainable & Green Design

At ZEX Company, sustainability isn't just a feature we add to our designs—it's a fundamental principle that informs every aspect of our architectural practice. We believe that environmentally responsible design is both an ethical obligation and a tremendous opportunity to create buildings that perform better, cost less to operate, and provide healthier environments for occupants.

Our integrated approach to sustainable architecture goes beyond basic code compliance to create buildings that work in harmony with natural systems, minimize resource consumption, and maintain their value over the long term. We view each project as an opportunity to advance the state of sustainable practice while delivering immediate and ongoing benefits to our clients.

Our Sustainable Design Strategies

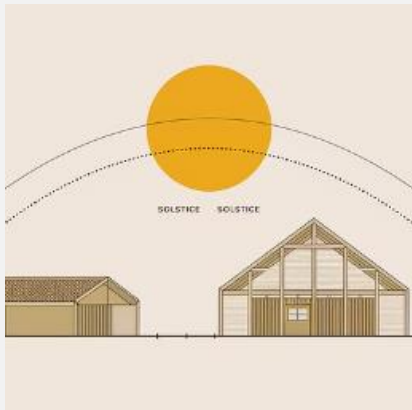
- **Energy Efficiency:** Optimized building envelopes, high-performance systems, and renewable energy integration that reduce consumption and operating costs
- **Water Conservation:** Innovative fixtures, rainwater harvesting, and landscaping solutions that minimize water usage while enhancing beauty and functionality
- **Material Selection:** Thoughtful specification of sustainable, non-toxic materials that reduce environmental impact while creating healthy interior environments
- **Site Sensitivity:** Designs that respect and enhance the natural features of the site, managing stormwater and preserving biodiversity
- **Indoor Environmental Quality:** Abundant natural light, excellent ventilation, and careful acoustic control to create spaces that promote wellbeing and productivity
- **Resilient Design:** Forward-thinking approaches that help buildings adapt to changing climate conditions and maintain functionality during extreme events

Certification Expertise

Our team includes LEED Accredited Professionals and specialists in other green building standards who can guide your project through various certification processes. We have extensive experience with:

- LEED (Leadership in Energy and Environmental Design)
- WELL Building Standard
- Living Building Challenge
- Passive House certification
- Net Zero Energy development
- Enterprise Green Communities

While we value these formal recognition systems, our commitment to sustainability extends beyond certification. Even when a project doesn't pursue official designation, we apply sustainable principles and practices to maximize environmental performance within your budget and program requirements.



Through early integration of sustainable strategies, we create buildings that achieve environmental goals while enhancing comfort, reducing operational costs, and providing superior long-term value. Our sustainable designs prove that responsible architecture can be beautiful, functional, and economically advantageous.

Interior Architecture & Space Planning

The interior spaces where we live, work, and gather profoundly influence our experiences, behaviors, and wellbeing. At ZEX Company, our interior architecture and space planning services transform raw square footage into environments that inspire, function beautifully, and reflect the unique character of their occupants.

We take a holistic approach to interior architecture, considering how every element—from the overall spatial organization to the smallest material detail—contributes to the creation of exceptional environments. By understanding how people interact with spaces and designing from both functional and experiential perspectives, we create interiors that exceed expectations and stand the test of time.

Comprehensive Interior Solutions

Our interior architecture services address every aspect of the built environment, working in harmony with the exterior architecture to create cohesive, thoughtfully designed spaces. Our expertise encompasses:

- **Space Planning & Programming:** Strategic organization of functions and circulation to optimize efficiency, promote desired behaviors, and enhance the user experience
- **Interior Systems Integration:** Seamless coordination of structural, mechanical, electrical, and other building systems with the interior design concept
- **Material & Finish Selection:** Thoughtful specification of surfaces, textiles, and fixtures that balance aesthetics, performance, maintenance, and sustainability
- **Lighting Design:** Comprehensive lighting strategies that enhance architectural features, support activities, and create appropriate atmosphere



Residential Interiors

We create homes that reflect your personal style while enhancing daily life through thoughtful organization, beautiful materials, and attention to the details that make a house truly yours.



Commercial Interiors

Our workplace, retail, and hospitality interiors balance brand expression with functional excellence, creating environments that support operations while making a memorable impression.



Institutional Interiors

We design educational, healthcare, and civic spaces that promote wellbeing, facilitate specialized functions, and create appropriate atmospheres for diverse user groups.

Whether working on new construction or renovating existing spaces, our interior architecture team brings the perfect combination of creative vision and technical knowledge to transform your interior environment. The result is spaces that don't just look beautiful but work beautifully for everyone who experiences them.



The Art of Interior Design

While our core expertise lies in interior architecture—the permanent, built elements of interior spaces—we also offer interior design services that address the selection and arrangement of furniture, accessories, and decorative elements. This integrated approach ensures consistency between the architectural framework and the elements that fill it, resulting in harmonious, cohesive environments.

Our interior design capabilities include:

- Custom furniture design and specification
- Art and accessory selection and placement
- Color strategy and palette development
- Window treatment design
- Acoustical solutions and considerations

Renovation & Adaptive Reuse

In a world increasingly focused on sustainability and preservation, breathing new life into existing structures has become an essential architectural skill. At ZEX Company, we specialize in renovation and adaptive reuse projects that honor the past while creating spaces perfectly suited for contemporary needs. Our expertise transforms outdated or underutilized buildings into vibrant, functional environments that combine historic character with modern performance.

Reimagining Existing Structures

Renovation and adaptive reuse projects present unique challenges and opportunities that require specialized expertise. Our team brings extensive experience with historic building systems, materials, and regulatory requirements, allowing us to navigate the complexities of working with existing structures while achieving exceptional results.

Our Renovation Capabilities

- **Historic Preservation:** Careful restoration and rehabilitation of historically significant buildings, maintaining their cultural value while implementing modern systems and amenities
- **Adaptive Reuse:** Creative transformation of buildings for purposes different from their original use, such as converting industrial spaces to residential lofts or warehouses to retail venues
- **Residential Remodeling:** Thoughtful updates to homes that enhance functionality and aesthetics while respecting the original architecture
- **Commercial Renovations:** Strategic modernization of workplaces, retail spaces, and other commercial environments to support contemporary business needs
- **Building System Upgrades:** Integration of advanced mechanical, electrical, and technology systems into existing structures with minimal disruption

The Benefits of Building Reuse

Choosing to renovate or adapt an existing building often offers significant advantages over new construction:

Sustainability

Reusing existing buildings conserves embodied energy, reduces construction waste, and minimizes resource consumption, making it one of the most environmentally responsible architectural choices.

Character & Heritage

Older buildings often possess distinctive architectural features, materials, and craftsmanship that contribute unique character and historical continuity to communities.

Economic Efficiency

Renovation can often be completed more quickly and cost-effectively than new construction, particularly when foundation, structural, and envelope elements remain viable.

Our approach to renovation and adaptive reuse begins with thorough assessment of the existing structure's condition, historical significance, and potential for transformation. We identify elements worth preserving while developing innovative solutions to address shortcomings and adapt the building to new requirements. Through this balanced process, we create spaces that honor their heritage while meeting contemporary needs for efficiency, comfort, and functionality.

Whether you're considering a minor update to your home, a major renovation of a commercial property, or the adaptive reuse of a historic structure, our specialized expertise ensures your project will respect the past while creating a viable space for the future.

3D Visualization & BIM Technology

At ZEX Company, we harness cutting-edge digital technologies to enhance every phase of the architectural process. Our advanced visualization and Building Information Modeling (BIM) capabilities transform abstract concepts into tangible representations, allowing you to experience your project virtually before construction begins. These powerful tools improve communication, decision-making, and coordination throughout the design and construction process, resulting in better outcomes and fewer surprises.

Seeing Your Project Before It's Built

Our digital visualization services bridge the gap between technical architectural drawings and the finished built environment, making design concepts accessible to everyone involved in the project regardless of their ability to interpret traditional plans and elevations.

Visualization Services

- **Photorealistic Renderings:** Highly detailed images that show exactly how spaces will look when completed, including materials, lighting, furnishings, and context
- **3D Flythrough Animations:** Dynamic video presentations that simulate the experience of moving through your future space, providing a deeper understanding of spatial relationships and flow
- **Virtual Reality (VR) Experiences:** Immersive environments that allow you to virtually occupy and explore your building before construction, making informed decisions about layouts and details
- **Augmented Reality (AR) Applications:** Tools that overlay digital elements onto real-world settings, helping visualize how additions or renovations will integrate with existing conditions

These visualization methods are invaluable for confirming that designs align with your expectations, helping stakeholders understand the project vision, and identifying opportunities for refinement before construction makes changes more costly.

Our digital expertise extends beyond design to support construction and post-occupancy phases. From generating precise fabrication data for custom components to creating digital twins for building management, we leverage technology to enhance every aspect of your project's delivery and ongoing performance.

By combining traditional architectural expertise with advanced digital capabilities, we create an exceptionally transparent, efficient, and accurate design process that helps you achieve the best possible results for your investment.

Building Information Modeling (BIM)

Beyond visualization, our use of BIM technology transforms the entire design and construction process. Rather than creating separate 2D drawings, we build comprehensive digital models that contain detailed information about every building component, creating a "virtual building" that serves as a single source of truth for the project.

The advantages of our BIM approach include:

- **Enhanced Coordination:** Automatic detection of conflicts between building systems before they become construction problems
- **Accurate Documentation:** Precise drawings and specifications generated directly from the model, reducing errors and inconsistencies
- **Data Integration:** Embedded information about materials, performance specifications, costs, and maintenance requirements
- **Efficient Collaboration:** Seamless information sharing among architects, engineers, contractors, and owners throughout the project lifecycle
- **Facility Management:** Digital resources that support ongoing building operations and maintenance after construction

Consultation & Feasibility Studies

Before committing significant resources to an architectural project, it's crucial to have a clear understanding of its viability, constraints, and potential. ZEX Company offers specialized consultation and feasibility study services that provide the insights you need to make informed decisions at the earliest stages of project planning.

Our objective analysis helps evaluate options, identify opportunities and challenges, and establish realistic parameters for budget, timeline, and scope. These early-stage services can be engaged independently or as the foundation for a full architectural commission, providing valuable direction that sets your project on the path to success.

Comprehensive Pre-Design Services

Our consultation and feasibility services address the critical questions that should be answered before design begins:

- Is the project physically and financially viable?
- What regulatory constraints will affect development?
- How can the site or existing building best be utilized?
- What is a realistic budget and timeline?
- What are the optimal approaches to achieve your goals?

Our Feasibility Services Include:



Site Analysis

Evaluation of property characteristics, including topography, orientation, access, utilities, environmental factors, and context to determine optimal development approaches.



Programming

Development of detailed space requirements based on your functional needs, operational patterns, and growth projections, establishing the foundation for efficient design.



Regulatory Review

Assessment of zoning regulations, building codes, historic designation requirements, environmental restrictions, and other legal parameters that will shape your project.



Cost Estimation

Preliminary budget development accounting for construction costs, professional fees, permits, contingencies, and other expenses to establish financial parameters for design decisions.

How to Get Started

Beginning an architectural project is an exciting step, whether you're creating a new building, renovating an existing space, or simply exploring possibilities. At ZEX Company, we've designed a straightforward process to help you move from initial ideas to actionable plans with confidence and clarity.

Initial Consultation Process

Your journey with ZEX Company begins with a no-obligation initial consultation. This meeting provides an opportunity to discuss your vision, explore potential approaches, and determine if our expertise and style align with your needs. Here's what you can expect:

- 1. Reach Out:** Contact us through our website, email, or phone to schedule your initial consultation. We'll ask for some basic information about your project to ensure we're prepared for our discussion.
- 2. Meet & Discuss:** During the consultation (in person, virtually, or at your site), we'll explore your goals, needs, constraints, and aspirations. We'll ask questions to understand not just what you want to build, but why it matters to you and how you'll use it.
- 3. Initial Insights:** We'll share our preliminary thoughts about approaches to your project, potential challenges and opportunities, and considerations you may not have anticipated.
- 4. Explain Our Process:** We'll outline how we would approach your specific project, including our methodology, timeline, and fee structure.
- 5. Next Steps:** If there's a good fit, we'll prepare a detailed proposal outlining services, deliverables, schedule, and professional fees for your consideration.

Preparing for Your First Meeting

To make the most of our initial consultation, consider gathering the following information and materials:



Project Goals

Outline your primary objectives, non-negotiable requirements, and wish-list items. Consider both practical needs and the feeling you want the space to evoke.



Inspiration

Collect images of spaces you admire or features you'd like to incorporate. These visual references help us understand your aesthetic preferences.



Timeline

Share any key dates or timeline considerations, such as when you need to occupy the space or specific milestones.



Budget Parameters

Have a preliminary budget range in mind, which helps guide discussions about scope and possibilities.

Contact Us & Next Steps

We're excited about the possibility of collaborating with you on your architectural project. ZEX Company is ready to answer your questions, discuss your vision, and explore how our expertise can help turn your ideas into reality. Reaching out is simple, and we're committed to responsive, helpful communication from your very first contact.

Get In Touch

Contact Information

- **Phone:** + 966 11 48 68 375
- **Email:** info@zex-ltd.com
- **Website:** www.zex-ltd.com

Request a Consultation

The best way to determine if we're the right architectural partner for your project is through an initial consultation. This no-obligation meeting allows us to learn about your goals, share our approach, and explore potential solutions.

Main Office

Saudi Arabia , Riyadh
Akariya Plaza , Gate “D” , Level 6

Regional Office

Egypt , Cairo
Sheraton , Behind Radisson Blu Hotel.

Our Process After Contact

